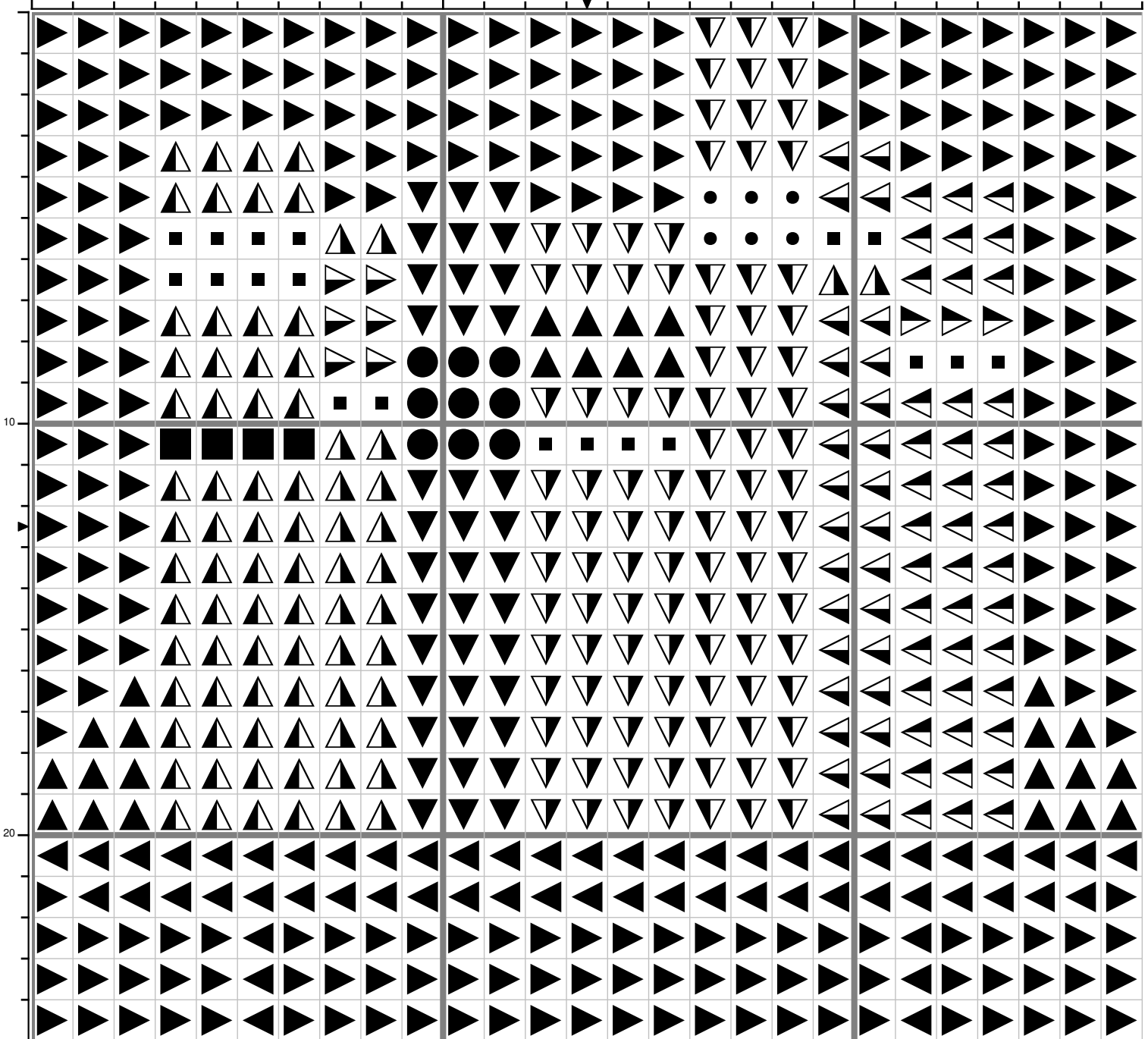


10

20



DMC Flosses

Symbol	Name	Strands	Description	Stitches	Length(m)	Skeins (8m)
▲	160	2 / 2	Blue Gray Medium	26	0.4	1 (0.01)
▶	162	2 / 2	Blue Ultra Very Light	251	3.85	1 (0.08)
●	164	2 / 2	Forest Green Lt	9	0.14	1 (0)
▲	167	2 / 2	Yellow Beige V Dk	58	0.89	1 (0.02)
▼	209	2 / 2	Lavender Dark	39	0.6	1 (0.01)
▲	304	2 / 2	Red Medium	56	0.86	1 (0.02)
▲	307	2 / 2	Lemon	30	0.46	1 (0.01)
▶	310	2 / 2	Black	3	0.05	1 (0)
▼	322	2 / 2	Baby Blue Dark	48	0.74	1 (0.02)
▲	352	2 / 2	Coral Light	42	0.64	1 (0.01)
▲	402	2 / 2	Mahogany Vy Lt	24	0.37	1 (0.01)
▼	470	2 / 2	Avocado Grn Lt	54	0.83	1 (0.02)
▶	519	2 / 2	Sky Blue	6	0.09	1 (0)
■	543	2 / 2	Beige Brown Ult Vy Lt	4	0.06	1 (0)
•	Ecru	2 / 2	Ecru	6	0.09	1 (0)
■	Blanc	2 / 2	White	19	0.29	1 (0.01)